



Leicester & Leicestershire  
Enterprise Partnership

**Leicestershire County Council  
Scrutiny Commission**

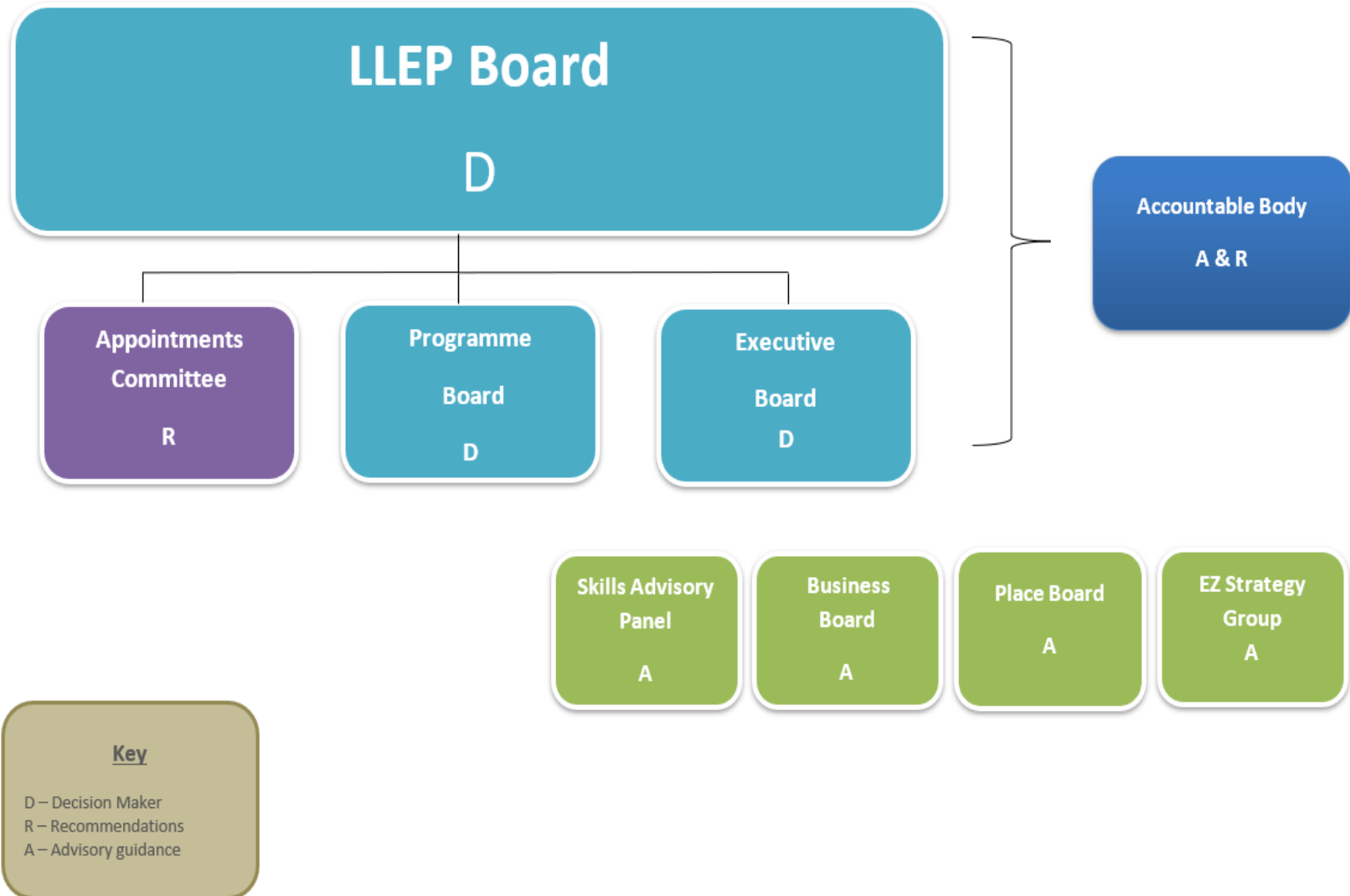
12 June 2019

**Andy Reed, Deputy Chair  
Mandip Rai, Chief Executive**

# Presentation

- **Background**
- **Strengthening LEPs Review July 2018**
- **LEP Review Implementation**
- **Review of 2018/19**
- **Annual Performance Review**
- **Priorities for 2019/20**
- **Local Industrial Strategy**

# Governance Structure



# Main Funding Streams

- £126m Local Growth Funds (LGF) secured through Growth Deals for 20 capital projects across city and county
- £119m European Structural and Investment Funds (ESIF) being invested from 2014 to 2021 to support SMEs and upskill the workforce 201
- Growing Places Fund (GPF) - £12m (revolving loan fund)
- Enterprise Zones Business Rates - £250m 2013 – 2042 (Estimate)

# Strategic Economic Plan 2014-2020

Ambition was:

- Create at least 45,000 net private sector jobs
- Increase Gross Value Added (GVA) by £4b to £23b
- Attract £2.5b private sector investment

By 2019:

- 30,000 more net jobs in Leicester and Leicestershire
- GVA increased to £24b
- Private sector investment exceeded £2.5b

# Local Growth Fund (LGF) Programme



Leicester & Leicestershire  
Enterprise Partnership

PROJECT	LGF
Leicester North West Major Transport Scheme (A50/A6)	£16.2m
MIRA EZ Skills Training Centre	£9.5m
Leicester Waterside Regeneration Area Programme	£20m
Leicester College - Skills & Innovation Village	£3.27m
Great Central Railway 'Bridging the Gap'	£1m
Local Sustainable Transport Fund Round 2 – Hinckley	£3.64m
North City Centre Access Investment Programme	£8.96m
Leicester & Leicestershire Accelerated Broadband	£3.1m
Leicester Strategic Flood Risk Management Strategy	£7.5m
A511 Growth Corridor - M1 J22 / A42 J13	£4.64m
M1-J21 & Lubbethorpe SES Access	£3.25m
Connecting Leicester City Wave 2	£7.2m
Melton Cattle Market & Food Enterprise Centre	3.5m
Leicester DOCK II	£2.16m
Coalville Workspace	£3.67m
Midland Mainline Improvement Market Harborough	£3m
Space Park Leicester	£13m
National Space Centre Extension	£1m
M1 Junction 23 and A512 Improvements	£12m
<b>TOTAL</b>	<b>£126m</b>

# Investments Map



Leicester & Leicestershire  
Enterprise Partnership

## Key Investments Map

### Leicestershire

**Superfast Broadband**  
LGF: Improving coverage of at least 24Mbps speeds to 98.4% in Leicester City and 97.9% in Leicestershire. Supported by €3.1m. Project Completed

**River Soar Flood Risk Management**  
LGF: Deliver improvements to the green infrastructure along the River Soar and Grand Union Canal through Leicester safeguarding 2,200 homes and reducing flood damage by €22m. Supported by €7.5m

**A511 Growth Corridor**  
LGF: Improvements to the A511/M1 junction 21 and the A511/A42 junction 13 required to improve capacity supporting delivery of 5,000 houses. Supported by €4.6m. Project Completed

**Optimus Point, Kirby Road/Ratby Lane - GFP3 (Wilson Bowden)**  
GPF: Construction of 400m spine road to open up 20 Ha of serviced plots for 11,670m<sup>2</sup> commercial workshop and 250 new houses. Supported by €3.1m

**Strategic Employment Site Lutterworth**  
LGF: Improvement to Leicester Lane to unlock delivery of 4,250 houses and 1,600 new jobs at 64,000m<sup>2</sup> of new commercial floorspace. Supported by €3.25m

- FUNDING STREAM
- Local Growth Fund (LGF)
- Growing Places Fund (GPF)
- Enterprise Zone (EZ)

**Loughborough and Leicester Science and Innovation Enterprise Zone**  
EZ: Charmed Campus. Providing simplified planning, superfast broadband investment incentives and cluster support for the Life Sciences sector.

**Loughborough and Leicester Science and Innovation Enterprise Zone**  
EZ: Loughborough University. Providing simplified planning, superfast broadband investment incentives and cluster support for the Advanced Manufacturing, Energy and Low Carbon sectors.

**Loughborough and Leicester Science and Innovation Enterprise Zone**  
EZ: Pioneer Park and Waterside. Providing simplified planning, superfast broadband investment incentives and cluster support for the High-Tech R&D and Space Technologies sectors. Waterside will provide high grade employment and grade A office space.

**Old Dalby Enterprise Village**  
GPF: Provision of new infrastructure and access road to deliver 4,200m<sup>2</sup> of new freehold plots of employment space aimed at SME owner occupiers. Supported by €950,000

**Melton Cattle Market**  
LGF: Improvements and development to 11,900m<sup>2</sup> of Melton Mowbray Livestock Market to meet Delta requirements and ensure continuous operation of this key economic asset to the town. Supported by €3.5m

**Bridging the Gap**  
LGF: Reunification of Great Central Railway track to create a unique continuous 18 mile line from Nottingham (Ruddington) to Leicester (Birstall) and reconnection to the Midland Mainline. Positive impact on local visitor economy. Supported by €1m

**A50 Transport Corridor**  
LGF: Improving movement and accessibility in and out of the City with resurfaced roads, footpaths, new cycle ways and pedestrian crossings. Supported by €1.62m

**Former Velodrome Site**  
GPF: Re-development of a brown field site to create a new access for 46 new residential units and unlock site for a further 70 units. Supported by €500,000

**MIRA Skills Training Centre**  
LGF: Development of a 2,192 m<sup>2</sup> hybrid building comprising classroom space and workshop/labatory space for training to fulfil the employment requirements of the MIRA Technology Park Enterprise Zone and wider area. Supported by €2.5m

**MIRA Technology Park EZ**  
EZ: Providing simplified planning, superfast broadband investment incentives and cluster support for the transport R&D sector. Supported by €1.1m

**Local Sustainable Transport Fund (Hickley)**  
LGF: Improve the walking and cycling experience with 21.4km of new cycle ways to reduce journey times and improve accessibility. Supported by €3.6m

**Leicester Waterside**  
GPF: To consolidate 1Ha of existing public sector land holdings within the Waterside Project area, that will become the new Waterside Enterprise Zone. Supported by €1.05m

**Leicester Waterside**  
LGF: Major regeneration project delivering 6,500m<sup>2</sup> commercial floor space, 410 houses, new roads and public realm. Supported by €20m

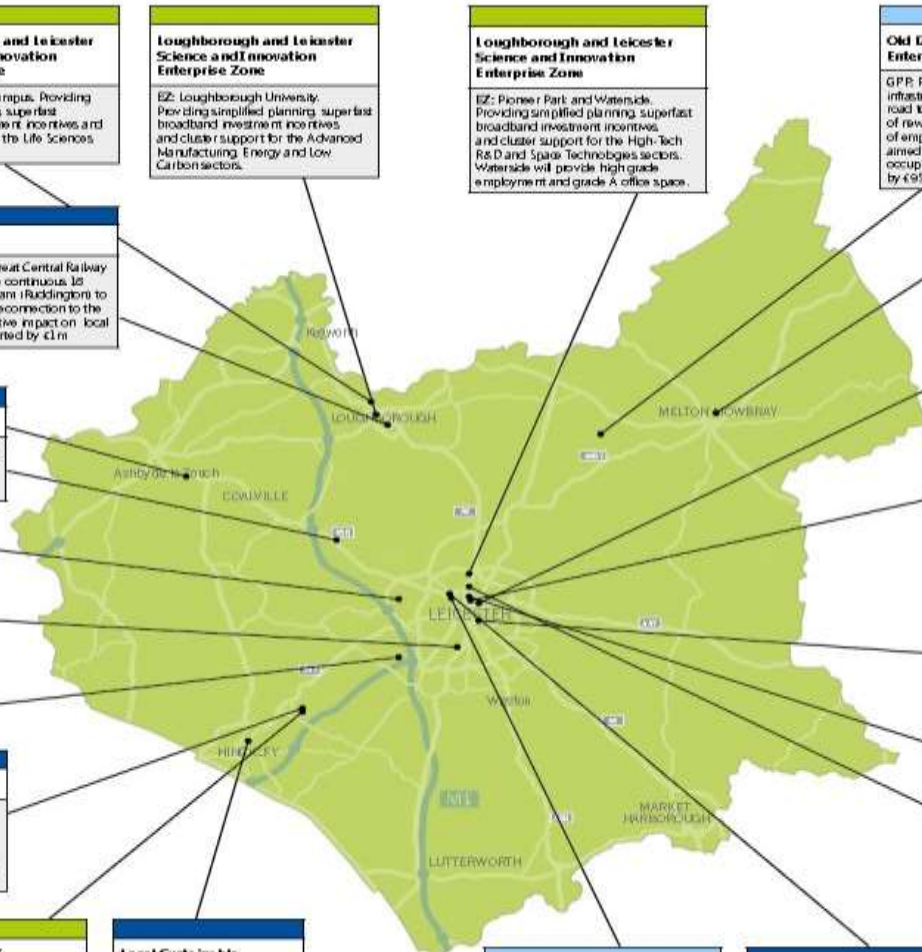
**North City Centre Access Investment Programme**  
LGF: Linked transport and public realm improvement works to roads, cycle ways and footpaths to regenerate the area and create better accessibility. Supported by €8.9m

**Abbey Quarter - Abbey Park Road**  
GPF: Provision of 81 homes to act as a catalyst to unlock Wolsey Island to be developed which could be in the region of 750 - 1,000 homes. Supported by €22,000. Project Completed

**Connecting Leicester (Market and Centra)**  
LGF: Improving pedestrian access and bus routes to Leicester City Centre, creating 900m<sup>2</sup> of new office and workspace and improvements to market trading area. Supported by €7.2m

**Skills and Innovation Village**  
LGF: Construction of new Motor Engineering Facility and Construction Technology Centre to support more firms and apprentices in these sectors. Supported by €3.27m. Project Completed

**Ashdon Green**  
GPF: Creating a new access road from Beaumont Leys Lane to Bonnon Road roundabout to open up 5Ha of employment land creating 10,000m<sup>2</sup> of manufacturing, warehousing and office space. Supported by €930,000



# LLEP Business Gateway





# Enterprise Zones



# Enterprise Adviser Network



# Strengthening LEPs Review

## July 2018

- **Defining LEPs' role in driving growth and productivity** by bringing greater strategic responsibility alongside new organisational structures.
- **Business leadership and corporate governance** to ensure that LEPs are diverse private sector led organisations
- **Accountability through rigorous financial reporting** and enforcement of transparent in decision making.
- **Geography and boundary overlaps** to ensure clarity, transparency and representation of functional economic areas.
- **Organisation and reporting consistency** a common incorporation model and the standardisation of organisational structures

# LLEP Review Implementation

## **Legal Personality**

Established a dormant Company Limited on 1st April 2019 (i.e. it does not trade, employ staff or manage financial transactions).

## **Independent Secretariat**

The Chief Executive reports exclusively to the LLEP Board and under its sole direction.

Service Level Agreement for Leicester City Council to provide support services (finance, legal, HR and IT).

Continuing to rent office space from Leicester City Council adjacent to City Hall on Halford Street.

# Review of 2019/20

- Full spend of Local Growth Fund (LGF) Programme. The LGF has enabled us to support a total of 20 projects with the £126m
- MIRA Technology Park created 509 high-tech jobs and attracted 24 companies on site to date.
- The Leicester Business Festival 119 events and attracted 7238 attendees
- The LLEP Business Gateway penetration has exceeded 4,702 businesses.
- Enterprise Adviser Network - third Career Speed Networking event which was attended by over 270 students and 143 businesses.
- Committed £101m of £119m European Structural and Investment Funds (ESIF)
- Implement LEP Review recommendations
- Local Industrial Strategy Prospectus – Wave 2

# Priorities for 2019/20

- Delivery of the LGF, GPF, Business Rates Pool and ESIF programmes
- Develop and launch Local Industrial Strategy
- Delivery of the MIRA Technology Park and Loughborough and Leicester Science and Innovation Enterprise Zones
- Deliver our Business Gateway project
- Delivery of Enterprise Advisor Network and Careers Hub
- Stronger Towns Fund / UK Shared Prosperity Funds consultation

# Annual Performance Review 2019

- Annual meeting between Cities and Local Growth Unit (CLGU) and LEPs to review performance
- LLEP review – Delivery (Exceptional), Governance (Good), Strategy (Requires improvement)
- Key issues – Pace of LIS development and outstanding Enterprise Zone Business Rates agreements
- Improvement Plan agreed and submitted to CLGU
  - Partnered with SEMLEM to share best practice
  - Quarterly review on LIS development progress

# Local Industrial Strategies (LIS)



Referenced in Industrial Strategy White Paper

Combined Authority or LEPs to prepare LIS

Focus on period up to 2030

To be agreed with Government by March 2020

Focus on local productivity strengths and challenges



# Industrial Strategy Overview

## Five Foundations



- Ideas
- People
- Infrastructure
- Business Environment
- Place

## Four Grand Challenges



- AI & Data Economy
- Future of Mobility
- Clean Growth
- Ageing Society

# LLEP LIS Prospectus



<https://www.youtube.com/watch?v=6VmX9QErSHw>

# LLEP LIS

- LIS Prospectus submitted to government in June 2018 and LLEP announced by government in July 2018 as one of six Wave 2 areas to develop LIS
- LIS is framework for conversation with government and **NOT** a bidding document / joint strategy with government
- Focus on local strengths that differentiate the area from others and identify small number of priorities
- Economic Review commissioned in December 2018 and to be completed in June 2019
- Stakeholder workshop and Special Board meeting May
- LLEP Board LIS Sub-Group to oversee LIS development with first meeting on 4 June

# PLACE - LEICESTER & LEICESTERSHIRE

## Leicester & Leicestershire: The Place



Contributing  
**£23.4 bn**  
per annum in GVA to the  
national economy.



GVA growth of over  
**£4 bn**  
in the last four years.



**42,400**  
businesses employing  
**485,000**  
people.



Located at the  
centre of a logistics  
golden triangle.



**22 million**  
people accessible within a  
three hour drive.



An hour by rail to  
London and direct  
rail links also  
to Birmingham,  
Nottingham and  
Sheffield.



The UK's  
**sixth**  
fastest growing city  
in 2015-16.



A young, dynamic  
and multicultural  
city with global  
connections.



A strong retail,  
tourism and  
cultural offer.



Two Enterprise Zones  
covering four sites,  
each with distinct  
sector specialisms.



The UK's only  
automotive  
focused EZ at MIRA  
Technology Park.



The UK's only  
Life Sciences  
Opportunities Zone at  
Charnwood Campus.



Historic market towns  
contributing over  
**£1 billion**  
to the urban and  
rural economy.



Food enterprise zones  
reinforcing the protected  
designation of two world  
famous food brands - Melton  
Mowbray park pies and  
Stilton cheese.



Three universities undertaking world-  
class research & supplying over  
**17,000**  
graduates each year with  
international connections.



Internationally  
renowned for sporting  
**excellence  
& success.**



**25**  
national sporting bodies  
located at the SportPark  
in Loughborough.



Loughborough University  
home to the National  
Centre for Sport & Exercise  
Medicine National Institute  
for Health Research



A high performing  
Further Education  
sector providing a  
strong vocational  
offer.



Innovative high-  
profile businesses  
such as Horiba  
MIRA, Triumph and  
PepsiCo.



East Midlands Airport the  
**UK's No.1**  
pure freight airport.



Proposed to connect  
to HS2 at the new  
East Midlands station  
at Toton.

# LIS Overview



Leicester & Leicestershire  
Enterprise Partnership

Theme	Healthy Place	Healthy People	Healthy Businesses
<b>Strategic Objective</b>	To deliver clean, sustainable growth in response to the climate emergency	To maintain a healthy workforce to improve productivity	To increase performance of all businesses by investing in skills, the adoption of new technologies and infrastructure
<b>Why Leicester &amp; Leicestershire?</b>  <b>Evidence</b>  <b>Challenges</b>  <b>Strengths</b>	First Environment City  Logistics High Car dependency / congestion Energy intensive sectors  Natural capital - National Forest Space - Data and Earth Observation Low Carbon technologies R&D Autonomous Vehicles R&D	UK's only Life Sciences Opportunity Zone at Charnwood Campus  Diverse population  Loughborough University top world sports university  World leading research on diabetes and respiratory disease  Significant Healthcare Sector  National Defence Rehabilitation Centre (NDRC)	Voted best City to start a business Tradition for entrepreneurship Track record for inward investment  Low productivity per worker High employment in low value sectors Low adoption and commercialisation of technology amongst SMEs  Diverse businesses and sectors Strong manufacturing base Supply chains across Midlands Engine
<b>What are we already doing?</b>	Strategic Growth Plan (SGP) Transforming Cities / Connecting Leicester Space Park Rolls Royce	Sport Park Charnwood Campus	Collaborate / Growth Hub Careers Hub MIRA Technology Institute

# LIS Timetable

Milestone	Date
Complete Economic Review	May 2019
LLEP Board to discuss emerging priorities	22 May 2019
LLEP Theme Boards to discuss emerging priorities	3-14 June 2019
Communication on priorities	June 2019
First draft LIS complete	30 July 2019
LLEP Board to approve first draft LIS	6 August 2019
LLEP Board to approve final draft LIS	1 October 2019
Submission to Government for departmental write round	4 October 2019
LLEP Board to approve LIS	6 December 2019